

1. Overview

1.1 Main Functions

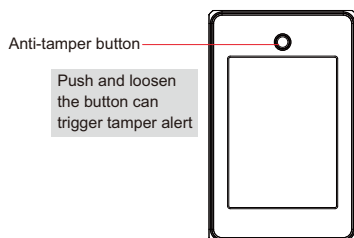
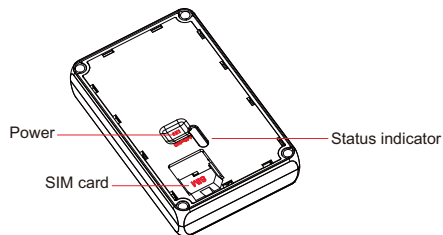
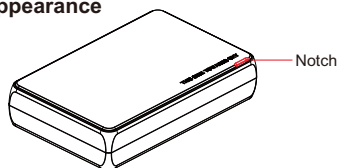
- GPS + LBS real-time tracking
- 5 years ultra-long standby
- IPX5 waterproof
- Remote setup
- Tamper alert
- Low battery alert
- Compact design

1.2 Specifications

Frequency	GSM 850/900/1800/1900MHz WCDMA 850/900/1900/2100MHz
Location Accuracy	<10 meters
Monitoring range	≤5 meters
Battery	5400mAh / 3.6V high power lithium battery
Standby time	5 years (one time positioning per day)
Operating temperature	-20℃— +70℃
Dimension	80(L) x 50(W) x 26(H) mm
Weight	158g

2. Appearance

2.1 Appearance



Push and loosen the button can trigger tamper alert

2.2 Standard Accessories

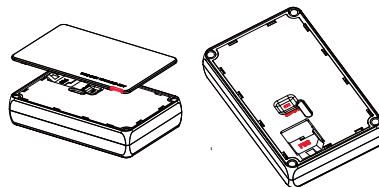
Device	1
3M foam tape	1
User guide	1

2.3 Indicators

Status	Meaning
Flicker quickly	Low battery
Flicker slowly	Normal
OFF	Sleep/Power off

3. SIM card

SIM card should have access to GPRS and SMS. Remove the cover, turn battery switch to OFF and insert the SIM card.



4. Installation

With strong magnet, the device has easy installation and can absorb on any magnetic item. Attached 3M foam tape help fix the device on non-magnetic items.



5. Operation

5.1 Power ON/OFF

Power on: Battery switch in on position
Power off: Battery switch in off position

5.2 SOS Number

Set SOS number by SMS, APP and platform (SMS is valid only in tracking mode).

(1) Add SOS number by SMS command

SOS, A, number1, number2, number3 # (A means add number).
Note: Maximum 3 SOS numbers can be set.

e.g. SOS, A, 13510****60, 135116****6, 136126****8# (set all 3 SOS numbers)

SOS, A, 13510****60# (set the first SOS number)

SOS, A, 135116****6# (set the second SOS number)

SOS, A, , 136126****8# (set the third SOS number)

(2) Delete SOS Numbers

Send SMS command:

SOS, D, 1, 2, 3# (D means delete SOS number)

e.g. SOS, D, 1# (means delete the first number)

SOS, D, 3# (means delete the third number)

If you do not know the sequence number, you can also delete the number by SMS command like this: SOS, D, number#

e.g. SOS, D, 13527852360# means delete this SOS number directly.

It will reply "OK" if the number is deleted successfully.

5.3 Work Mode

Default: Positioning one time a day.

(1) Ultra-long standby mode: device locates only one time every day and then goes sleep.

Set the sleep period by SMS command:

MODE, 2, T1, T2#

"2" means ultra-long standby mode.

"T1" means the start time of sleeping period which format is HH:MM.

"T2" means the sleep time interval which options are 1, 2, 3, 4, 6, 8, 12, 24 (hours). Defaulted setting is 24 hours.

Note: SMS command takes effect after device wakes up.

E.g. MODE, 2, 12:00, 8# (Meaning: Device starts to fall asleep at 12:00, and wakes up every 8 hours)

Notice: When device are in ultra-long standby mode, all command will NOT be executed until the device wakes up at preset time interval. If you want to compel the device to wake up and receive command, you can a. By trigger the tamper alert button at the back; b. By unplug the battery and plug it in again.

(2) Tracking mode: Set GPS continuous working hours on APP or platform. Tasks will be executed within 24 hours. Tracking mode can be set by APP, tracking platform or SMS.

MODE, 1, T1, T2#

"1" means tracking mode.

"T1" means the time interval to upload location, ranges from 10-1800 (seconds)

"T2" means the working duration, ranges from 5-43200 (minutes)

Note: SMS command takes effect after device wakes up.

E.g. MODE, 1, 30, 5# (Meaning: When device wakes up, it would work for 5 minutes, during which period, it uploads locations per 30 seconds.)

5.4 Tamper Alert

In standby mode, alert message will be uploaded and tracking mode will be activated for 20 minutes if device dis-assembly is detected. After 20 minutes, device enters into ultra-long standby

mode.

If alert release notification received within 20 minutes, the device will immediately get into ultra-long standby mode; Tamper alert activated in 3 minutes after power on.

6. Platform & APP

6.1 Login service platform

Please login the designated service platform to set and operate the device.

6.2 Download APP

Please download and install the APP in designated website, APP store or Google Play store.

7. Warning

Battery specified by manufacturer is recommended. Maintenance or service arising from any other accessories is not guaranteed.

Manufacturer assumes no responsibility for any damage caused by non-original accessories.

The lithium battery is non-rechargeable.
Do not bend or open the battery.

Do not immerse or burn the battery.
Device dis-assembly is strongly forbidden.

Nonprofessionals' operation may cause device damage.

Troubleshooting

If you are having trouble with your device, try these troubleshooting procedures before contacting a service professional.

Problems	Causes	Solutions
Poor signal	The signal waves are unable to transmit when use the GPS tracker in the places that have poor signal reception, such as: tall building around or basement	Using the GPS tracker in the places that have good signal condition.
Unable to boot	Power switch is off No SIM card	Switch to ON Insert SIM card
Unable to connect to the network	SIM card inserted incorrectly Dirty things exist above the SIM card Invalid SIM card	Check SIM card Clean SIM card Contact network supplier
Fail to locate	Not in GSM service area	Move to service area
	Poor signal	Move to area with strong signal
	SIM has no access to GPRS	Contact network supplier to get GPRS service
	Always reply "Address inquiry failed"	Contact supplier

Warranty instructions and service

1. The warranty is valid only when the warranty card is properly completed, and upon presentation of the proof of purchase consisting of original invoice indicating the date of purchase, model and serial No. of the product. We reserve the right to refuse warranty if this information has been removed or changed

- after the original purchase of the product from the dealer.
- Our obligations are limited to repair of the defect or replacement the defective part or at its discretion replacement of the product itself.
- Warranty repairs must be carried out by our Authorized Service Centre. Warranty cover will be void, even if a repair has been attempted by any unauthorized service centre.
- Repair or replacement under the terms of this warranty does not provide right to extension or renewal of the warranty period.
- The warranty is not applicable to cases other than defects in material, design and workmanship.

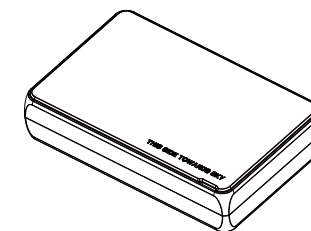
Maintenance Record

Date	Serviced by
Product Model	
IMEI Number	
Fault Descriptions	
Comments	

3G Ultra-long Standby GPS Tracker

User Guide

(Version 1.0)



To ensure quickly and correctly use, please read this manual carefully before using. Any changes to the product appearance, color or accessories are without notice.